

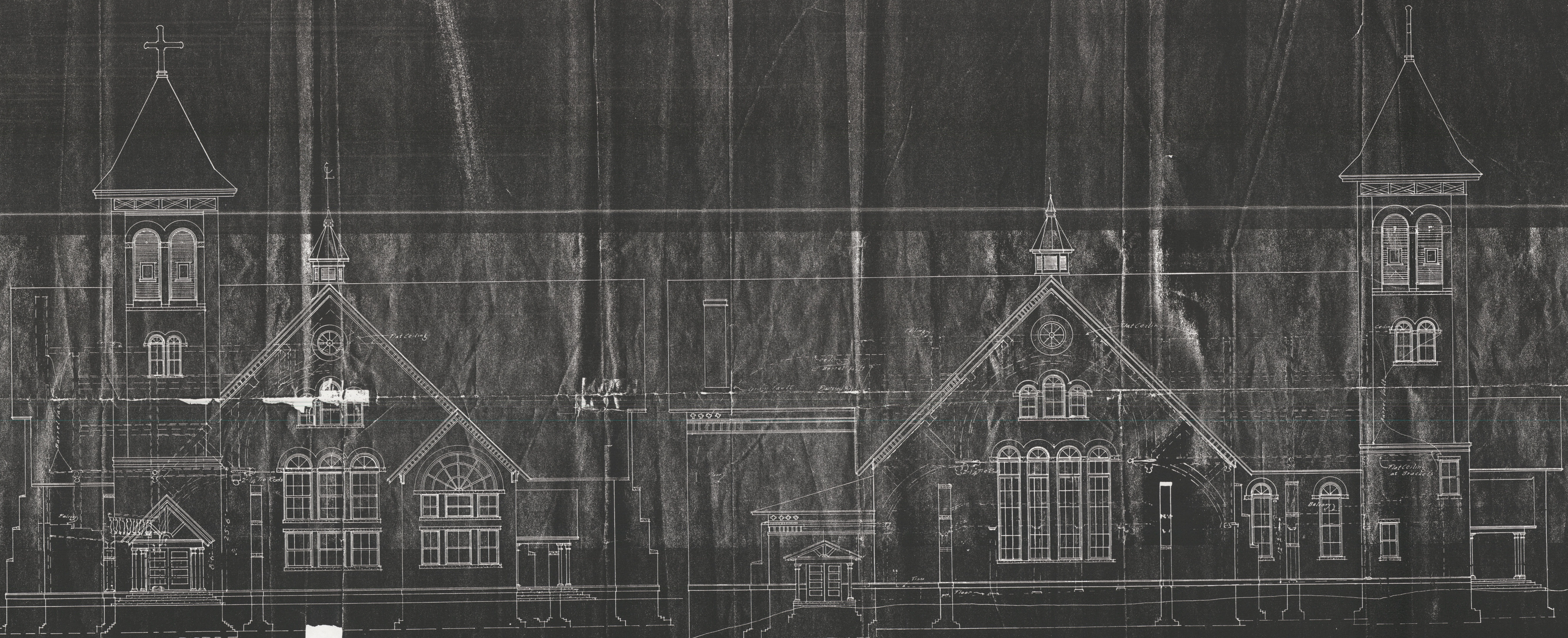
ARCHITECTURAL & MECHANICAL
DRAWING DIVISION
TUSKEGEE - N.C. INST. - ALA.

THE TUSKEGEE INSTITUTE - CHAPEL -
TUSKEGEE - N.C. INST. - ALA.

DESIGN
-1042-

DATE
JUNE - 1925

1



FRONT ELEVATION
SCALE 1/8" = 1'-0"

NOTE
SECTION B.B. (DOTTED)

RIGHT SIDE ELEVATION
SCALE 1/8" = 1'-0"

NOTE
SECTION A.A. (DOTTED)